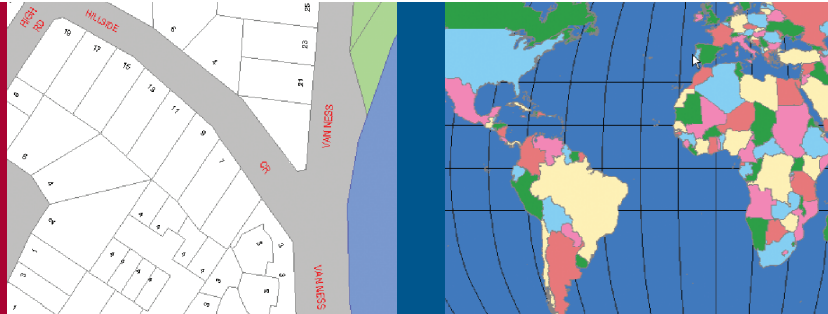


# MAPINFO® MAPXTREME® FOR WINDOWS 2004

MapInfo's industry leading location-based development environment for decision and analysis support

MapInfo®  
MapXtreme®



## Summary

### Features

- *Single offering for development of location-enabled applications on the web or desktop*
- *Ease-of-use and rapid application development enabling easy integration of location*
- *Interoperability through compliance with standards*
- *Feature rich tool allowing development of complex and flexible applications*

[www.mapxtreme.com](http://www.mapxtreme.com)

With MapInfo® MapXtreme® for Windows 2004 you can visualise and analyse data to discover new relationships and trends not apparent using traditional methods such as spreadsheets and reports. Public and private sector organisations throughout the world are using mapping and location-based decision and analysis support systems to make accurate and informed strategic decisions on where to market and sell, manage and protect physical assets and transport products efficiently. MapXtreme 2004 addresses these requirements in a way that meets the demands and expectations of your organisation – today and tomorrow.

MapXtreme for Windows 2004 is a major release of MapInfo's industry leading location-based development environment, which will enable you to create custom mapping applications and to map-enable applications and solutions in both Microsoft Windows desktop and web environments.

MapXtreme 2004 provides you with:

- A **single offering** for the development of location-based or location-enabled Windows applications for deployment on the web or desktop.
- Application development made **easy** through MapInfo's seamless integration with the Visual Studio.NET Development Environment, extending its capabilities to include location.
- True **interoperability** through compliance with both geospatial and IT industry standards.
- An incrementally **feature rich** developer tool that allows development of applications with previously unseen complexity and flexibility.

### MapXtreme 2004 SDK

Designed for Microsoft Windows programmers who are familiar with the Microsoft .NET development environment, the MapXtreme 2004 SDK will enable you to develop applications and solutions that incorporate location within your existing systems and infrastructure.

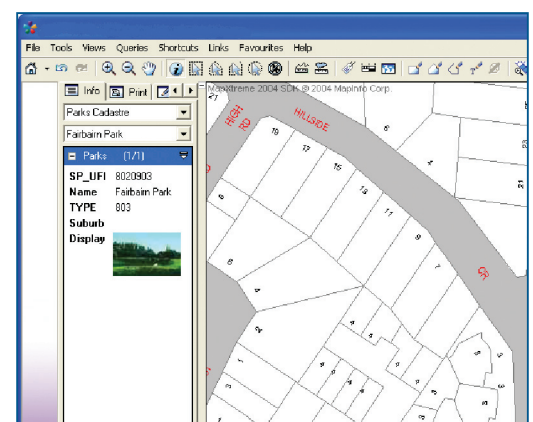
The MapXtreme 2004 SDK is a single offering which gives you the ability to develop desktop or web solutions, for smart-client, client server, intranet/extranet or mixed environments.

### Web Deployment

MapXtreme 2004 facilitates the rapid development of web applications by providing map application templates, multiple map control tools, sample applications and drag and drop development functionality. All web deployable .NET languages such as ASP.NET can be used with MapXtreme 2004.

### Desktop Deployment

Much like the web development option, MapXtreme 2004 desktop development option includes numerous map application templates that automatically configure and load the mapping environment for the deployment type chosen. This includes commonly used map control tools, sample applications and drag and drop development functionality. MapXtreme 2004 desktop option provides full support for Microsoft's .NET languages such as VB.NET, C# and Visual C++.



## For more information:

### UK and European Head Office

MapInfo Ltd  
Minton Place  
Victoria Street  
Windsor, Berkshire  
SL4 1EG, UK  
Tel: +44 (0)1753 848 200  
Fax: +44 (0)1753 621 140  
europe@mapinfo.com  
www.mapinfo.co.uk

### MapInfo GmbH

Tel: +49 6142 203 400  
Email: germany@mapinfo.com

### MapInfo Benelux

Tel: +31 (0)183 642 950  
Email: benelux@mapinfo.com  
Web: www.mapinfo.nl

### MapInfo Ltd Sweden

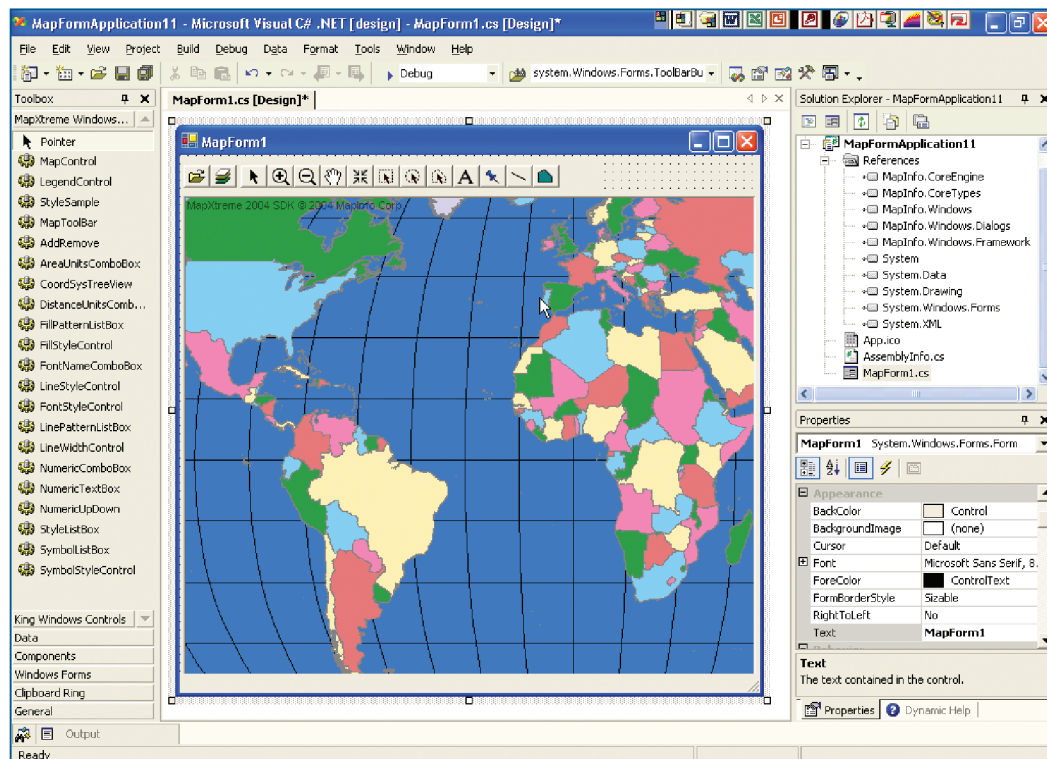
Tel: +46 (0) 8 50 52 11 08  
Email: sweden@mapinfo.com

### MapInfo Ltd Spain

Tel: +34 91 418 5083  
Email: spain@mapinfo.com

### MapInfo Ltd Italy

Tel: +39 06 5483 2224  
Email: italia@mapinfo.com



## All New Features and Functionality

MapInfo MapXtreme for Windows 2004 offers you new and exciting features:

### Single Offering

- Single SDK for the development of web and desktop applications and solutions.
- Efficient sharing of code and knowledge between deployment types.
- Common and consistent desktop and web development experience.

### Ease-of-use

- Full integration with the Visual Studio.NET Development Environment.
- Drag and drop functionality to develop applications.
- Pre-defined map templates and sample applications to facilitate rapid application development.
- Develop applications using the .NET language of your choice making efficient use of the IT skills within your organisation.

### Interoperability

- Support for IT standards such as Microsoft .NET, ADO.NET and SQL-3.
- Support for geospatial standards such as OpenLS and OpenGIS Consortium, such as GML, WMS and WFS.
- Access your data 'where it lives' within your organisation using standard data access systems and protocols such as ADO.NET, ODBC, Oracle Spatial and Microsoft SQL Server.
- Integrate location into third party business intelligence systems within your organisation.
- Directly access location capabilities such as Geocoding and Routing within your application (using Web Services).

## Feature Rich

- Superior data access engine with improved functionality and performance due to the use of flexible cursors, source agnostic approach to data and the use of industry standard query language.
- WMS and WFS server and client capabilities.
- High performance means a better return on your investment.
- Built-in extensible user interface toolbars and dialogue facilities for rapid development.
- Enhanced flexibility of display options through curved labeling, improved symbology and fill patterns.
- Additional functionality through improved granularity. For example, improve the clarity of your maps by separating map elements, attribute data and analysis results, for better display placement and draw order control.

## Supported Environments

MapInfo MapXtreme for Windows 2004 supports a wide variety of spatial and non-spatial databases as well as a large selection of file formats.

### Supported databases

- SQL Server 2000
- MS Access
- Informix IDS 9.3
- Oracle 9i\*
- Oracle 8.1.7
- SpatialWare for Microsoft SQL Server and IBM Informix\*

### Operating Systems

- Windows 2000
- Windows XP
- Windows 2003

### Development Frameworks

- Microsoft .NET Framework 1.1
- Visual C#
- Visual Studio.NET 2003
- VB.NET

*\*Refer to product documentation for a complete list of supported versions. All other databases are supported via standard ODBC and ADO.NET connections.*